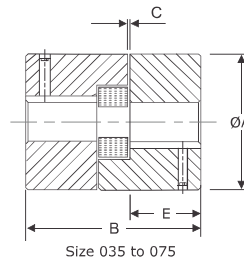




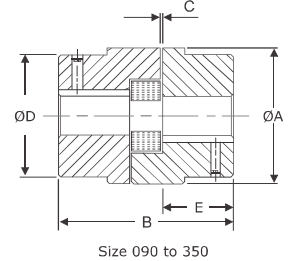
RSV Industries Pvt. Ltd.

UTL US COUPLINGS
(Spider Elastomer)

UTL FLEXIBLE COUPLINGS



Size 035 to 075



Size 090 to 350

FEATURES

- Simple construction, quick and easy installation
- Spider design presets correct distance between hubs, using raised dimple on leg of the spider
- Spiders are unaffected by moisture, grease and oils including non - aromatic and non - ketone solvents
- Temperatures within the range - 40°C to + 100°C
- Range up to 4308 Nm
- Maximum permissible misalignment: angular 1°, parallel 0.4 mm & axial 3 mm (initial alignment must be 25 % of maximum)

DIMENSIONS & TECHNICAL DATA

Size	Rated Torque Nm	kW Rating at			Dimensions are in mm							Torsional Stiffness Nm / rad	Material of hubs		Wt in. Kg SI	Wt in. Kg CI	Wt in. Kg AL	Moment of inertial (kg.m ²)
		100 rpm	1500 rpm	300 rpm	Min. Bore	Max. Bore	ØA	B	C	ØD	E							
35	0.38	0.004	0.06	0.12	3	10	16	19	1	16	5.5	4	SI	AL	0.02	-	-	3.2.10 ⁻⁷
50	2.50	0.030	0.45	0.90	6	16	28	46	1	28	17	36	SI	AL	-	-	-	7.50.10 ⁻⁶
70	4.90	0.050	0.75	1.50	9	20	35	51	2	36	19	80	SI	AL	0.26	-	0.12	2.91.10 ⁻⁵
75	9.80	0.100	1.50	3.00	9	22	45	55	2	45	21	119	SI/CI	AL	0.44	-	0.19	7.43.10 ⁻⁵
90	21	0.220	3.30	6.60	10	28	54	55	2	54	21	275	CI	AL	-	-	-	1.96.10 ⁻⁴
95	21	0.220	3.30	6.60	10	28	54	63	2	49	25	275	SI/CI	AL	-	-	0.31	2.88.10 ⁻⁴
99	35	0.370	5.55	11.10	10	30	65	72	2	51	27	688	CI	AL	-	-	-	4.92.10 ⁻⁴
100	46	0.490	7.35	14.70	10	35	65	88	2	57	35	688	CI	AL	-	0.75	0.61	7.67.10 ⁻⁴
110	89	0.930	13.95	27.90	15	42	85	108	3	76	43	1719	CI	AL	-	3.20	-	2.77.10 ⁻³
150	141	1.490	22.35	44.70	15	48	96	115	3	80	45	2120	CI	-	-	3.90	-	4.19.10 ⁻³
190	190	2.010	30.15	60.30	20	60	115	133	3	102	54	3495	CI	-	-	7.50	-	0.01200
225	265	2.760	41.40	82.80	20	65	127	153	3	111	64	4584	CI	-	-	10.50	-	0.01800
226	324	3.430	51.45	102.90	25	70	137	178	3	119	70	6990	CI	-	-	13.00	-	0.03000
276	532	5.600	84.00	168.00	25	75	157	200	3	127	80	12720	CI	-	-	19.00	-	0.05300
280	782	8.200	123.00	246.00	30	80	192	200	3	140	80	22517	CI	-	-	25.00	-	0.10200
295	1279	13.400	201.00	-	40	95	237	238	3	162	95	51222	CI	-	-	44.00	-	0.27100
2955	2132	22.400	336.00	-	50	105	237	264	3	180	108	85428	CI	-	-	51.00	-	0.32000
300	3047	31.900	478.50	-	50	105	254	283	3	180	115	126395	CI	-	-	58.00	-	0.41000
350	4308	45.000	675.00	-	50	115	305	309	3	200	128	183633	CI	-	-	86.00	-	0.82100

MATERIAL SPECIFICATIONS

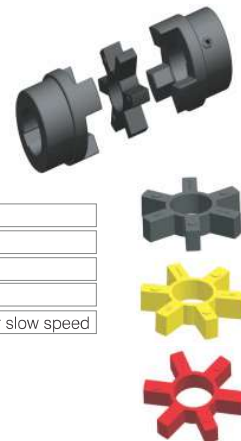
Hub	Size - 050-110	Aluminum	AL	BS 1490 - LM 4
Hub	Size - 035-070	Sintered Iron	SI	DIN - 30910 C 11
Hub	Size - 090-225	Cast Iron	CI	DIN 1693 GG 20
Hub	Size - 226-350	Cast Iron	CI	DIN 1693 GG 25
Spider 80° Shore A	Size - 035-350	Synthetic Rubber	NBR	ASTM D2000 BG 810

• Alternative Spider for higher power ratings is available on request.

Spider 92° Shore A	Size - 035-350	Synthetic Rubber	NBR	ASTM D2000 BG 910	Torque 1.6 times of standard
Spider 80° Shore A	Size - 035-350	Synthetic Rubber	EPDM	ASTM D2000 AA 810	Torque as per standard
Spider 92° Shore A (Yellow Colour)	Size - 035-350	Polyurethane	PU		Torque 1.8 times of standard
Spider 98° Shore A (Red Colour)	Size - 035-350	Polyurethane	PU		Torque 2.5 times of standard
Spider 65° Shore D	Size - 050-095	Hytrel	Hyt		Torque 3.5 times of standard for slow speed

- Max speed not to exceed for CI hubs for surface speed V = 35m / sec
- Max speed not to exceed for Aluminum hubs for surface speed V = 30m / sec
- Max speed not to exceed for SI hubs for surface speed V = 25m / sec

• For temperature range of elastomers please see on page no. 37 - coupling selection



RSV Industries Pvt. Ltd.

www.rsvindustries.com

sales@rsvindustries.com

+91 74004 33355